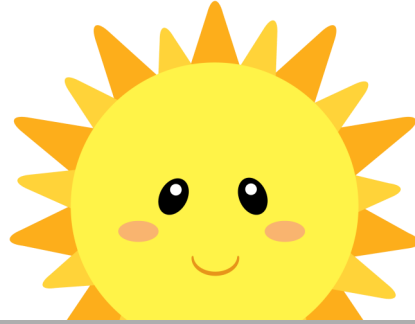


Reading Passage

Read the text and the questions. Circle the correct answer.



FREE PREVIEW

**Please Login or Become a Member to download
the printable version of this worksheet.**

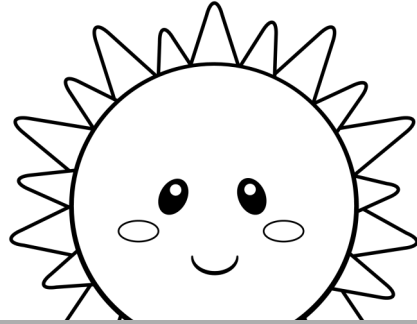
- A. The sun is blue.
- B. The sun is yellow.

2. What shape is it?

- A. It is a square.
- B. It is a circle.

Reading Passage

Read the text and the questions. Circle the correct answer.



FREE PREVIEW

**Please Login or Become a Member to download
the printable version of this worksheet.**

- A. The sun is blue.
- B. The sun is yellow.

2. What shape is it?

- A. It is a square.
- B. It is a circle.