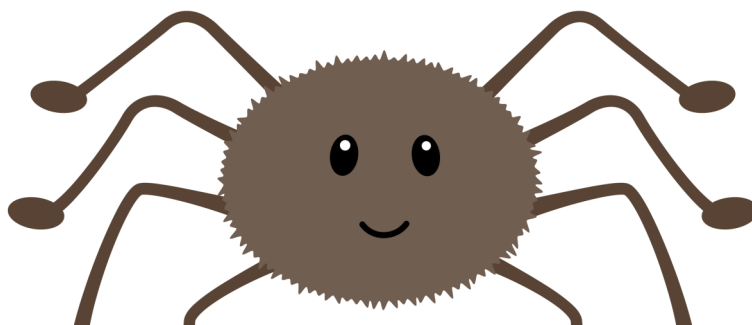


Reading Passage

Read the text and the questions. Circle the correct answer.



FREE PREVIEW

Please Login or Become a Member to download the printable version of this worksheet.

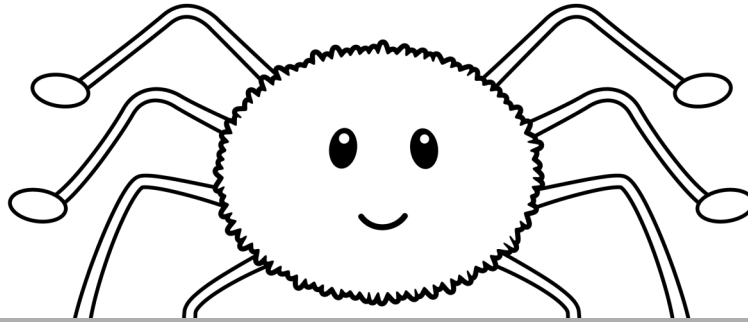
- A. That is a big spider.
- B. That is a big ladybug.

2. How many legs does it have?

- A. It has four legs.
- B. It has eight legs.

Reading Passage

Read the text and the questions. Circle the correct answer.



FREE PREVIEW

Please Login or Become a Member to download the printable version of this worksheet.

- A. That is a big spider.
- B. That is a big ladybug.

2. How many legs does it have?

- A. It has four legs.
- B. It has eight legs.